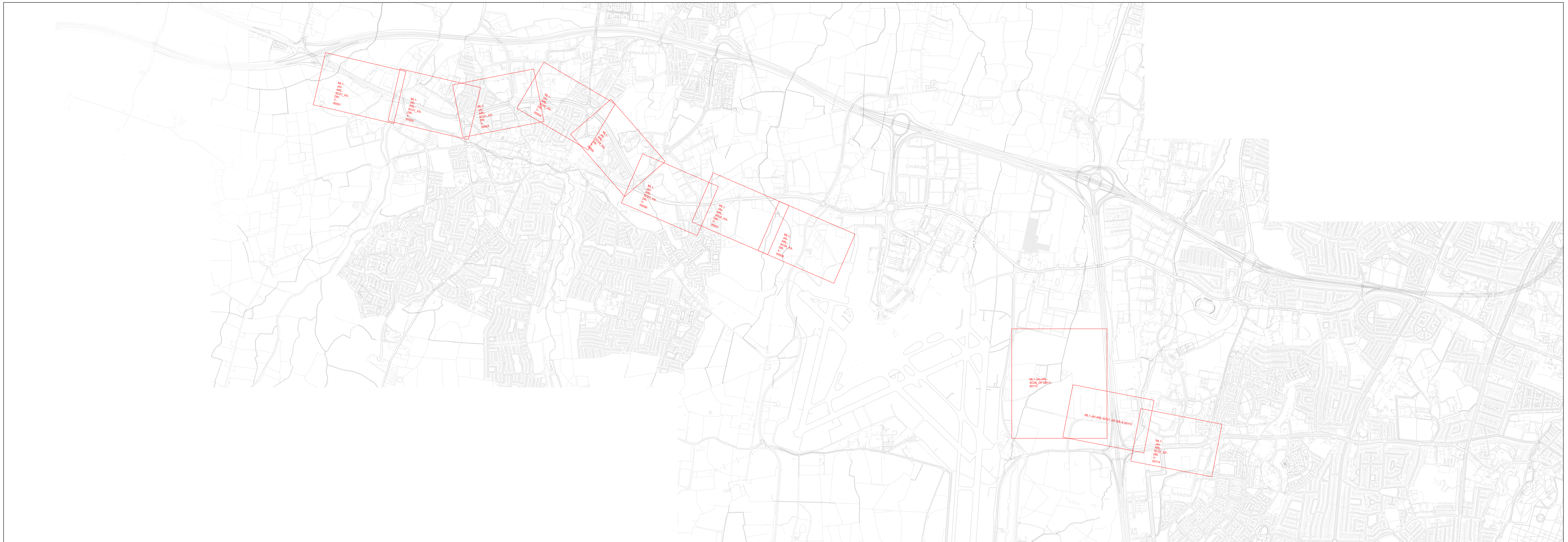


**Estuary to Charlemont**  
**Plans of Proposed Railway Works**  
Landscaping Details  
Fingal County Council and  
Dublin City Council  
AREA ML301-307  
Lissenhall to Ranelagh Road





**KEY PLAN LAYOUT**

## RAILWAY WORKS - METROLINK

### LANDSCAPE DETAILS FINGAL COUNTY/DUBLIN CITY COUNCIL AREA BOOK 1 OF 1 LISSENHALL TO RANELAGH ROAD

Internal Drawing No.	Drawing Title
ML1-JAI-ARL-SC01_XX-DR-Y-00001	ESTUARY - SEATOWN LANDSCAPE LAYOUT
ML1-JAI-ARL-SC01_XX-DR-Y-00002	ESTUARY - SEATOWN LANDSCAPE LAYOUT
ML1-JAI-ARL-SC01_XX-DR-Y-00003	ESTUARY - SEATOWN LANDSCAPE LAYOUT
ML1-JAI-ARL-SC02_XX-DR-Y-00004	SEATOWN - SWORDS CENTRAL LANDSCAPE LAYOUT
ML1-JAI-ARL-SC03_XX-DR-Y-00005	SWORDS CENTRAL - FOSTERSTOWN LANDSCAPE LAYOUT
ML1-JAI-ARL-SC03_XX-DR-Y-00006	SWORDS CENTRAL - FOSTERSTOWN LANDSCAPE LAYOUT
ML1-JAI-ARL-SC04_XX-DR-Y-00007	FOSTERSTOWN - DUBLIN AIRPORT LANDSCAPE LAYOUT
ML1-JAI-ARL-SC04_XX-DR-Y-00008	FOSTERSTOWN - DUBLIN AIRPORT LANDSCAPE LAYOUT
ML1-JAI-ARL-SC06_GF-DR-Y-00113	DEPOT & DARDISTOWN STATION LANDSCAPE LAYOUT
ML1-JAI-ARL-SC07_GF-DR-X-00113	NORTHWOOD - BALLYMUN LANDSCAPE LAYOUT
ML1-JAI-ARL-SC07_GF-DR-Y-00114	NORTHWOOD - BALLYMUN LANDSCAPE LAYOUT



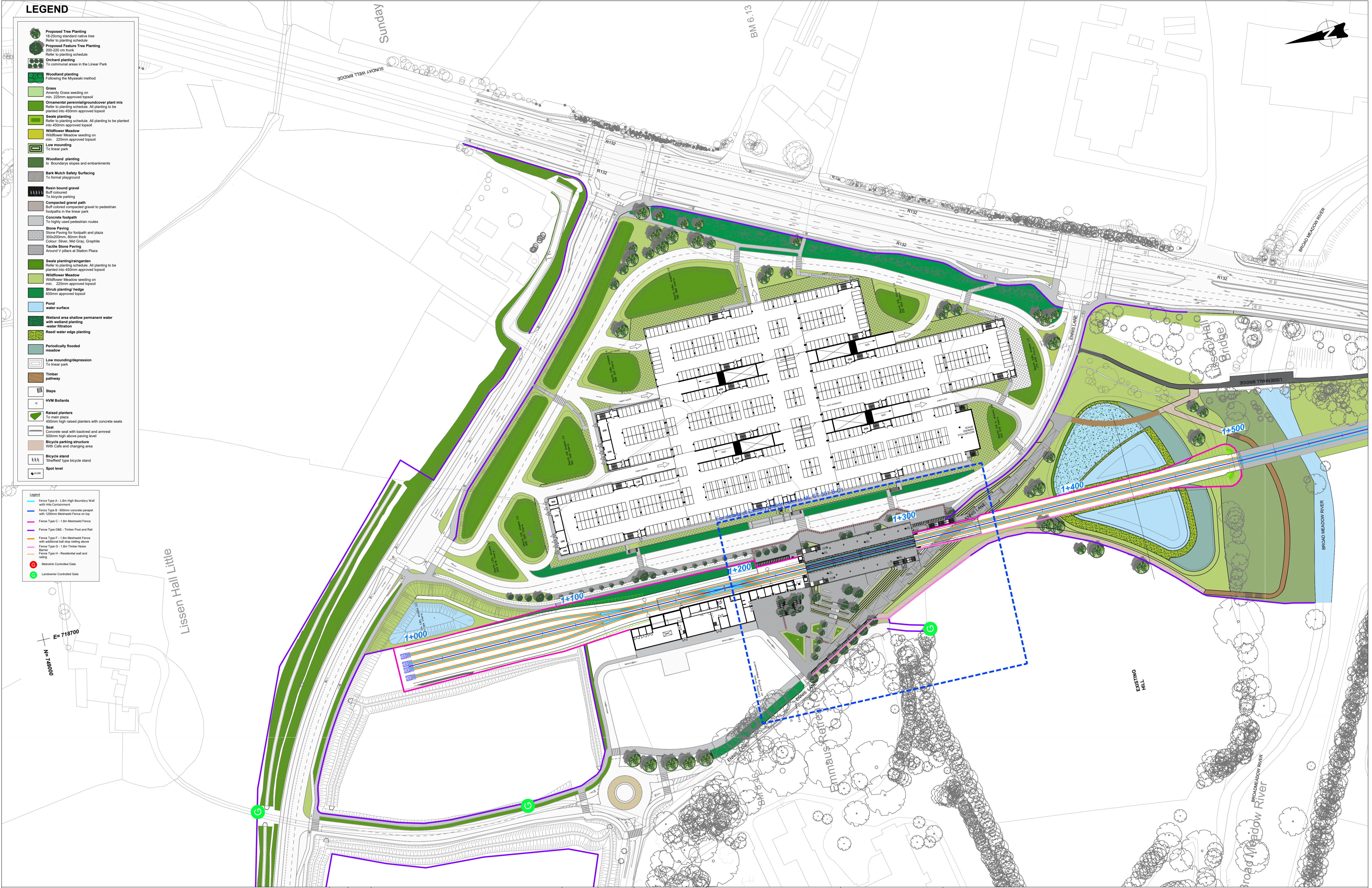
© National Roads Authority (NRA) 1994-2022. This drawing is confidential and the copyright in it is owned by NRA. This drawing must not be either loaned, copied or otherwise reproduced in whole or in part or used for any purpose without the prior permission of NRA. Transport Infrastructure Ireland (TII) is an operational name of the National Roads Authority.  
© Ordnance Survey Ireland 2022/ OSi NMA 273.  
All elevations are in metres and relate to OSi Geoid Model (OSGM02) Malin Head as defined by existing Project Control.  
All Co-ordinates are in Irish Transverse Mercator Grid (ITM) as defined by OSi active GPS station Tallaght College(TLLG).



**LEGEND**

- Proposed Tree Planting  
18-20mm standard native tree  
Refer to planting schedule
- Proposed Feature Tree Planting  
200-250mm trunk  
Refer to planting schedule
- Orchard planting  
To communal areas in the Linear Park
- Woodland planting  
Following the Miyawaki method
- Grass  
Amenity Grass seeding on  
min. 225mm approved topsoil
- Ornamental perennial/groundcover plant mix  
Refer to planting schedule. All planting to be  
planted into 450mm approved topsoil
- Swale planting  
Refer to planting schedule. All planting to be planted  
into 450mm approved topsoil
- Wildflower Meadow  
Wildflower Meadow seeding on  
min. 225mm approved topsoil
- Low mounding  
To linear park
- Woodland planting to  
boundaries slopes and embankments
- Bark Mulch Safety Surfacing  
To formal playground
- Rein bound gravel  
Black coloured  
To bicycle parking
- Compacted gravel path  
Buff coloured compacted gravel to pedestrian  
footpaths in the linear park
- Concrete footpath  
To highly used pedestrian routes
- Stone Paving  
Stone Paving for footpath and plaza  
300x200mm, 50mm thick  
Colour: Silver, Mid Gray, Graphite
- Tactile Stone Paving  
Around V plate at Station Plaza
- Swale planting/vegetation  
Refer to planting schedule. All planting to be  
planted into 450mm approved topsoil
- Wildflower Meadow  
Wildflower Meadow seeding on  
min. 225mm approved topsoil
- Shrub planting/hedge  
600mm approved topsoil
- Pond  
water surface
- Wetland area shallow permanent water  
with wetland planting  
water filtration
- Reed water edge planting
- Periodically flooded  
meadow
- Low mounding/depression  
To linear park
- Timber  
pathway
- Steps
- HVM Bollards
- Raised planters  
To main plaza  
450mm high raised planters with concrete seats
- Seat  
Concrete seat with backrest and armrest  
500mm high above paving level
- Bicycle parking structure  
With Cafe and changing area
- Bicycle stand  
"Sheffield" type bicycle stand
- Spot level

- Legend**
- Fence Type A - 1.8m High Boundary Wall  
with H4 Containment
  - Fence Type B - 600mm concrete parapet  
with 1000mm Meshhead Fence on top
  - Fence Type C - 1.5m Meshhead Fence
  - Fence Type DAE - Timber Post and Rail
  - Fence Type F - 1.8m Meshhead Fence  
with additional ball stop setting above
  - Fence Type G - 1.8m Timber Horse  
Barrier
  - Fence Type H - Residential wall and  
railing
  - Metrolink Controlled Gate
  - Landowner Controlled Gate



Key Plan

P03	01/09/22	Preliminary Design Issue	FP	MM	MM	PB
P02	28/07/22	Preliminary Design Issue	CF	FP	FP	NC
P01	18/05/21	Preliminary Design Issue	FP	MM	MM	PB
REV.	DATE	DESCRIPTION	DRAWN BY	CHECKED BY	REVIEWED BY	APPROVED BY

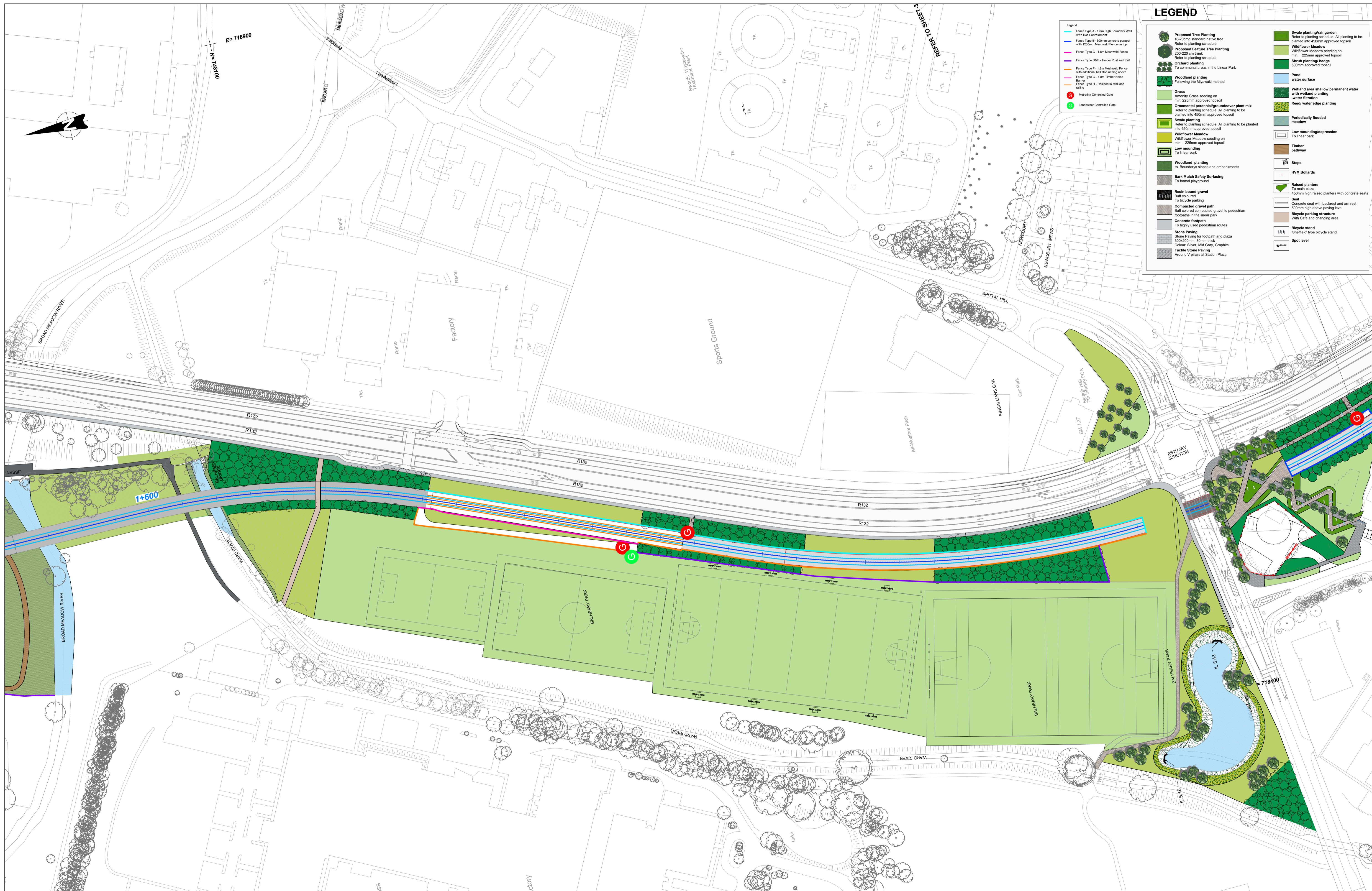
© National Roads Authority (NRA) 1994-2022. This drawing is confidential and the copyright in it is owned by NRA. This drawing must not be either loaned, copied or otherwise reproduced in whole or in part or used for any purpose without the prior permission of NRA. Transport Infrastructure Ireland (TII) is an operational name of the National Roads Authority.  
 © Ordnance Survey Ireland 2022/ OSi\_NMA\_273.  
 All elevations are in metres and relate to OSi Geoid Model (OSGM02) Malin Head as defined by existing Project Control.  
 All Co-ordinates are in Irish Transverse Mercator Grid (ITM) as defined by OSi active GPS station Tallaght College (TLTG).

Client

Consultant

Project	Drawing Title	Drawing Status
Estuary - Seatown Landscape Layout Preliminary Design Issue		S4
Drawing N°	ML1-JAI-ARL-SC01_XX-DR-Y-00001	
Scales Original Size A1	1:1000	Sheet 1 of 3





Legend	
	Fence Type A - 1.8m High Boundary Wall with H4 Containment Refer to planting schedule
	Fence Type B - 800mm concrete kerb with 100mm Meshed Fence on top Refer to planting schedule
	Fence Type C - 1.8m Meshed Fence Refer to planting schedule
	Fence Type D - Timber Post and Rail Refer to planting schedule
	Fence Type E - 1.8m Meshed Fence with additional ball stop netting above Refer to planting schedule
	Fence Type F - 1.8m Timber Hoop Fence Refer to planting schedule
	Fence Type G - Residential wall and railing Refer to planting schedule
	Landowner Controlled Gate
	Meyrick Controlled Gate
	Landowner Controlled Gate
	Proposed Tree Planting 18-20cm standard native tree Refer to planting schedule
	Proposed Feature Tree Planting 200-250cm tree Refer to planting schedule
	Orchard planting To communal areas in the Linear Park
	Woodland planting Following the Miyawaki method
	Grass Amenity Grass seeding on min. 225mm approved topsoil
	Ornamental perennial/groundcover plant mix Refer to planting schedule. All planting to be planted into 450mm approved topsoil
	Swale planting Refer to planting schedule. All planting to be planted into 450mm approved topsoil
	Wildflower Meadow Wildflower Meadow seeding on min. 225mm approved topsoil To linear park
	Low mounding To linear park
	Woodland planting to boundaries slopes and embankments
	Bark Mulch Safety Surfacing To formal playground
	Resin bound gravel Buff coloured To bicycle parking
	Compacted gravel path To bicycle parking
	Concrete footpath To light used pedestrian routes
	Stone Paving Stone Paving for footpath and plaza 300x300mm, 60mm thick Colour: Silver, Mid Gray, Graphite
	Tactile Stone Paving Round V tiles at Station Plaza
	Swale planting/training Refer to planting schedule. All planting to be planted into 450mm approved topsoil
	Wildflower Meadow Wildflower Meadow seeding on min. 225mm approved topsoil
	Shrub planting 600mm approved topsoil
	Pond water surface
	Wetland area shallow permanent water with wetland planting water filtration
	Reed water edge planting
	Periodically flooded meadow To linear park
	Low mounding/depression To linear park
	Timber pathway
	Steps
	HVM Bollards
	Raised planters To main plaza 600mm high raised planters with concrete seats
	Seat Concrete seat with backrest and armrest 600mm high above paving level
	Bicycle parking structure With Gate and Changing area
	Bicycle stand Shielded type bicycle stand
	Spot level

Key Plan

REV.	DATE	Description	DRAWN BY	CHECKED BY	REVIEWED BY	APPROVED BY
P03	01/09/22	Preliminary Design Issue	FP	MM	MM	PB
P02	28/07/22	Preliminary Design Issue	FP	MM	MM	PB
P01	18/05/21	Preliminary Design Issue	FP	FP	MM	NC

© National Roads Authority (NRA) 1994-2022. This drawing is confidential and the copyright in it is owned by NRA. This drawing must not be either loaned, copied or otherwise reproduced in whole or in part or used for any purpose without the prior permission of NRA, Transport Infrastructure Ireland (TII) is an operational name of the National Roads Authority.  
 © Ordnance Survey Ireland 2022/ OS/NMA\_273.  
 All elevations are in metres and relate to OSi Geoid Model (OSGM02) Mean Head as defined by existing Project Control.  
 All Co-ordinates are in Irish Transverse Mercator Grid (ITM) as defined by OSi active GPS station Tallaght College (TLG0).

Client  
  
 Project  
  
 Consultant

Drawing Title	Estuary - Seatown Landscape Layout Preliminary Design Issue	Drawing Status	S4
Drawing N°	ML1-JAI-ARL-SC01_XX-DR-Y-00002		
Scales Original Size A1	1:1000	Sheet	2 of 3



**LEGEND**

	Proposed Tree Planting 18-20cm standard native tree Refer to planting schedule		Reed/ water edge planting
	Proposed Feature Tree Planting 200-220 cm trunk Refer to planting schedule		Periodically flooded meadow
	Orchard planting To communal areas in the Linear Park		Low mounding/depression To linear park
	Woodland planting Following the Miyawaki method		Timber pathway
	Grass Artery Grass seeding on min. 225mm approved topsoil		Steps
	Ornamental general/groundcover plant mix Refer to planting schedule. All planting to be planted into 450mm approved topsoil		HVM Bollards
	Swale planting Refer to planting schedule. All planting to be planted into 450mm approved topsoil		Raised planters To main plaza 450mm high raised planters with concrete seats
	Wildflower Meadow Wildflower Meadow seeding on min. 225mm approved topsoil		Seat Concrete seat with backrest and armrest 500mm high above paving level
	Low mounding To linear park		Bicycle parking structure With Cafe and charging area
	Woodland planting to boundaries slopes and embankments		Bicycle stand 'Sheffield' type bicycle stand
	Bank Match Safety Surfacing To formal playground		Spot level
	Reinforced gravel Buff coloured To bicycle parking	<b>Legend</b>	
	Compacted gravel path Buff coloured compacted gravel to pedestrian footpaths in the linear park		Fence Type A - 1.8m High Boundary Wall with H4 Containment
	Concrete footpath To highly used pedestrian routes		Fence Type B - 800mm concrete parapet with 100mm Mesh/Steel Fence on top
	Stone Paving Stone Paving for footpath and plaza 300x300mm, 80mm thick Colour: Silver, Mid Gray, Graphite		Fence Type C - 1.8m Mesh/Steel Fence
	Tactile Stone Paving Around V pillars at Station Plaza		Fence Type D&E - Timber Post and Rail
	Swale planting/raingarden Refer to planting schedule. All planting to be planted into 450mm approved topsoil		Fence Type F - 1.8m Mesh/Steel Fence with additional bar stop netting above
	Wildflower Meadow Wildflower Meadow seeding on min. 225mm approved topsoil		Fence Type G - 1.8m Timber Noise Barrier
	Shrub planting hedge 800mm approved topsoil		Fence Type H - Residential wall and fencing
	Pond water surface		Metlink Controlled Gate
	Wetland area shallow permanent water with wetland planting water filtration		Landowner Controlled Gate



Key Plan

P03	01/09/22	Preliminary Design Issue	FP	MM	MM	PB
P02	28/07/22	Preliminary Design Issue	CF	FP	FP	NC
P01	18/05/21	Preliminary Design Issue	FP	MM	MM	PB
REV.	DATE	DESCRIPTION	DRAWN BY	CHECKED BY	REVIEWED BY	APPROVED BY

© National Roads Authority (NRA) 1994-2022. This drawing is confidential and the copyright in it is owned by NRA. This drawing must not be either loaned, copied or otherwise reproduced in whole or in part or used for any purpose without the prior permission of NRA. Transport Infrastructure Ireland (TII) is an operational name of the National Roads Authority.  
 © Ordnance Survey Ireland 2022/ OSi\_NMA\_273.  
 All elevations are in metres and relate to OSi Geoid Model (OSGM02) Malin Head as defined by existing Project Control.  
 All Co-ordinates are in Irish Transverse Mercator Grid (ITM) as defined by OSi active GPS station Tallaght College (TLG).

Client

Project

Consultant

Drawing Title	Estuary - Seatown Landscape Layout Preliminary Design Issue	Drawing Status	S4
Drawing N°	ML1-JAI-ARL-SC01_XX-DR-Y-00003		
Scales Original Size A1	1:1000	Sheet	3 of 3





**LEGEND**

- Proposed Tree Planting  
18-20cm standard native tree  
Refer to planting schedule
- Proposed Feature Tree Planting  
200-220cm trunk  
Refer to planting schedule
- Orchard planting  
To communal areas in the Linear Park
- Woodland planting  
Following the Mayne method
- Grass  
Amenity Grass seeding on top  
min. 225mm approved topsoil
- Ornamental groundcover/groundcover plant mix  
Refer to planting schedule. All planting to be planted into 450mm approved topsoil
- Swale planting  
Refer to planting schedule. All planting to be planted into 450mm approved topsoil
- Wildflower Meadow  
Wildflower Meadow seeding on top  
min. 225mm approved topsoil
- Low mounding  
To linear park
- Woodland planting  
To Bourne slopes and embankments
- Bank Muck Safety Surfacing  
To formal playground
- Resin bound gravel  
Buff coloured  
To bicycle parking
- Compacted gravel path  
Buff coloured compacted gravel to pedestrian footpaths in the linear park
- Concrete footpath  
To highly used pedestrian routes
- Stone Paving  
Stone Paving for footpath and plaza  
300x200mm, 50mm thick  
Colour: Silver, Mid Grey, Graphite
- Tactile Stone Paving  
Around V pillars at Station Plaza
- Swale planting/triangarden  
Refer to planting schedule. All planting to be planted into 450mm approved topsoil
- Wildflower Meadow  
Wildflower Meadow seeding on top  
min. 225mm approved topsoil
- Shrub planting/hedge  
600mm approved topsoil
- Pond water surface
- Wetland area shallow permanent water  
with wetland planting  
water filtration
- Reed water edge planting
- Periodically flooded meadow
- Low mounding/depression  
To linear park
- Timber pathway
- Steps
- HVM Bollards
- Raised planters  
To main plaza  
450mm high raised planters with concrete seats
- Concrete seat with backrest and armrest  
500mm high above paving level
- Bicycle parking structure  
With Cafe and changing area
- Bicycle stand  
'Sheffield' type bicycle stand
- Spot level

- Fence Type A - 1.8m High Boundary Wall with H4 Containment
- Fence Type B - 600mm concrete parapet with 200mm Meshed Fence on top
- Fence Type C - 1.8m Meshed Fence
- Fence Type D&E - Timber Post and Rail
- Fence Type F - 1.8m Meshed Fence with additional self stop netting above
- Fence Type G - 1.8m Timber House
- Fence Type H - Residential wall and railing
- Metrosika Controlled Gate
- Landowner Controlled Gate

Key Plan

REV.	DATE	Description	DRAWN BY	CHECKED BY	REVIEWED BY	APPROVED BY
P03	01/09/22	Preliminary Design Issue	FP	MM	MM	PB
P02	28/07/22	Preliminary Design Issue	CF	FP	FP	NC
P01	18/05/21	Preliminary Design Issue	FP	MM	MM	PB

© National Roads Authority (NRA) 1994-2022. This drawing is confidential and the copyright in it is owned by NRA. This drawing must not be either loaned, copied or otherwise reproduced in whole or in part or used for any purpose without the prior permission of NRA, Transport Infrastructure Ireland (TII) is an operational name of the National Roads Authority.  
 © Ordnance Survey Ireland 2022/ OSI\_NMA\_273.  
 All elevations are in metres and relate to OSI Geoid Model (OSGM02) Malin Head as defined by existing Project Control.  
 All Co-ordinates are in Irish Transverse Mercator Grid (ITM) as defined by OSI active GPS station Tallaght College (TLG0).

Client: **TII** **NTA** **METROLINK**

Consultant: **JACOBS** **IDOM**

Drawing Title	Seaton - Swords Central Landscape Layout Preliminary Design Issue	Drawing Status	S4
Drawing N°	ML1-JAI-ARL-SC02_XX-DR-Y-00004		
Scales Original Size A1	1:1000	Sheet	1 of 1





**LEGEND**

	Proposed Tree Planting 18-20cm standard native tree Refer to planting schedule
	Proposed Feature Tree Planting 200-220 cm trunk Refer to planting schedule
	Orchard planting To communal areas in the Linear Park
	Woodland planting Following the Miyawaki method
	Grass Amenity Grass seeding on min. 225mm approved topsoil
	Ornamental perennial/groundcover plant mix Refer to planting schedule. All planting to be planted into 450mm approved topsoil
	Sedge planting Refer to planting schedule. All planting to be planted into 450mm approved topsoil
	Wildflower Meadow Wildflower Meadow seeding on min. 225mm approved topsoil
	Low mounding To linear park
	Woodland planting to boundaries slopes and embankments
	Bark Mulch Safety Surfacing To formal playground
	Rain bound gravel Self colour To bicycle parking
	Compacted gravel path Buff coloured compacted gravel to pedestrian footpaths in the linear park
	Concrete footpath To highly used pedestrian routes
	Stone Paving Stone Paving for footpath and plaza 300x200mm, 80mm thick Colour: Silver, Mid Grey, Graphite
	Tactile Stone Paving Around V pillars at Station Plaza
	Swale planting/train garden Refer to planting schedule. All planting to be planted into 450mm approved topsoil
	Wildflower Meadow Wildflower Meadow seeding on min. 225mm approved topsoil
	Shrub planting hedge 600mm approved topsoil
	Pond water surface
	Wetland area shallow permanent water with wetland planting water filtration
	Reed water edge planting
	Periodically flooded meadow
	Low mounding/depression To linear park
	Timber pathway
	Steps
	HYM Bollards
	Raised planters To retail plaza 450mm high raised planters with concrete seats
	Concrete seat with backrest and armrest 500mm high above paving level
	Bicycle parking structure With Cafe and changing area
	Bicycle stand 'Sheffield' type bicycle stand
	Spot level

**Legend**

	Fence Type A - 1.8m High Boundary Wall with H4 Containment
	Fence Type B - 600mm concrete parapet with 1200mm Meshweld Fence on top
	Fence Type C - 1.8m Meshweld Fence
	Fence Type D - Timber Post and Rail
	Fence Type E - 1.8m Meshweld Fence with additional 600mm strip netting above
	Fence Type G - 1.8m Timber Hoop
	Barrier
	Fence Type H - Residential wall and netting
	Motorist Controlled Gate
	Landowner Controlled Gate

Key Plan

REV.	DATE	DESCRIPTION	DRAWN BY	CHECKED BY	REVIEWED BY	APPROVED BY
P03	01/09/22	Preliminary Design Issue	FP	MM	MM	PB
P02	28/07/22	Preliminary Design Issue	CF	FP	FP	NC
P01	18/05/21	Preliminary Design Issue	FP	MM	MM	PB

© National Roads Authority (NRA) 1994-2022. This drawing is confidential and the copyright in it is owned by NRA. This drawing must not be either loaned, copied or otherwise reproduced in whole or in part or used for any purpose without the prior permission of NRA, Transport Infrastructure Ireland (TII) is an operational name of the National Roads Authority.  
 © Ordnance Survey Ireland 2022/ OSI\_NMA\_273.  
 All elevations are in metres and relate to OSI Geoid Model (OSGM02) Malin Head as defined by existing Project Control.  
 All Co-ordinates are in Irish Transverse Mercator Grid (ITM) as defined by OSI active GPS station Tallaght College (TLG0).

Client

Project

Consultant

Drawing Title	Swords Central - Fosterstown Landscape Layout Preliminary Design Issue	Drawing Status	S4
Drawing N°	ML1-JAI-ARL-SC03_XX-DR-Y-00005		
Scales Original Size A1	1:1000	Sheet	1 of 2





**LEGEND**

- Proposed Tree Planting (18-20cm standard native tree) Refer to planting schedule
- Proposed Feature Tree Planting (200-250cm tree) Refer to planting schedule
- Ornamental planting Refer to communal areas in the Linear Park
- Woodland planting Following the Miyawaki method
- Grass Amenity Grass seeding on min. 200mm approved topsoil
- Ornamental perennial/groundcover plant mix Refer to planting schedule. All planting to be planted into 450mm approved topsoil
- Swale planting Refer to planting schedule. All planting to be planted into 450mm approved topsoil
- Wildflower Meadow Wildflower Meadow seeding on min. 225mm approved topsoil
- Low mounding/depresion To linear park
- Woodland planting to Boundaries slopes and embankments
- Bark Mulch Safety Surfacing To formal playground
- Resin bound gravel Buff coloured To bicycle parking
- Compacted gravel path Buff coloured compacted gravel to pedestrian footpaths in the linear park
- Concrete footpath To highly used pedestrian routes
- Stone Paving Stone Paving for footpath and plaza 300x300mm, 60mm thick Colour: Silver, Mid Gray, Graphite
- Tactile Stone Paving Around V pillars at Station Plaza
- Swale planting/raingarden Refer to planting schedule. All planting to be planted into 450mm approved topsoil
- Wildflower Meadow Wildflower Meadow seeding on min. 225mm approved topsoil
- Shrub planting/hedge 600mm approved topsoil
- Pond water surface
- Wetland area shallow permanent water with wetland planting -water filtration
- Reed water edge planting
- Periodically flooded meadow
- Low mounding/depresion To linear park
- Timber pathway
- Steps
- HVM Bullards To main plaza
- Raised planters 450mm high raised planters with concrete seats
- Seat Concrete seat with backrest and armrest 500mm high above paving level
- Bicycle parking structure With Cafe and changing area
- Bicycle stand Shuttle type bicycle stand
- Spot level

**Legend**

- Fence Type A - 1.8m High boundary Wall with H4 Containment
- Fence Type B - 600mm concrete parapet with 100mm Meshweel Fence on top
- Fence Type C - 1.8m Meshweel Fence
- Fence Type DAE - Timber Post and Rail
- Fence Type F - 1.8m Meshweel Fence with additional bell stop netting above
- Fence Type G - 1.8m Timber Noise Barrier
- Fence Type H - Residential wall and railing
- Masovira Controlled Gate
- Landowner Controlled Gate

Key Plan

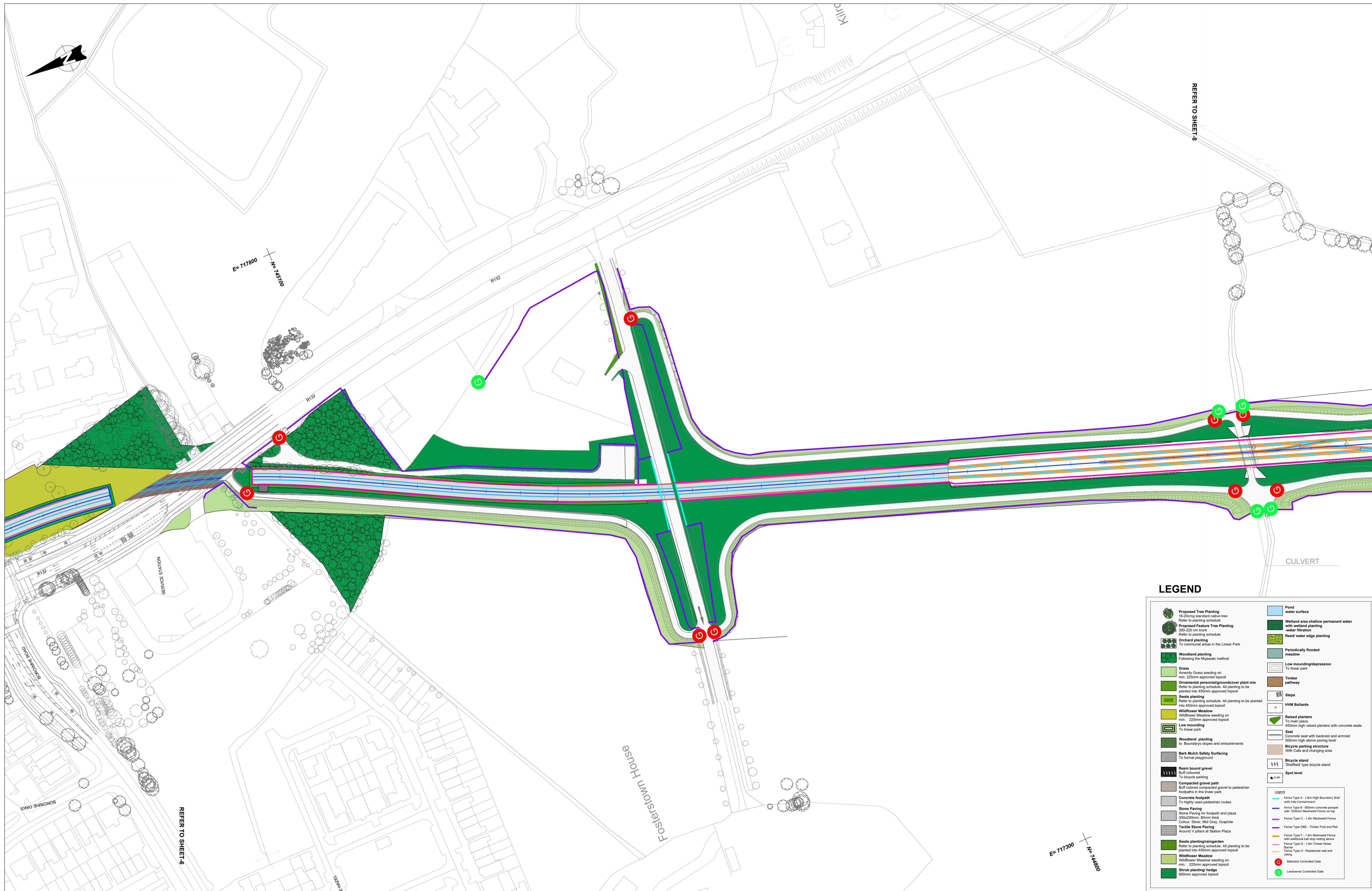
REV.	DATE	Description	DRAWN BY	CHECKED BY	REVIEWED BY	APPROVED BY
P03	01/09/22	Preliminary Design Issue	FP	MM	MM	PB
P02	28/07/22	Preliminary Design Issue	CF	FP	FP	NC
P01	18/05/21	Preliminary Design Issue	FP	MM	MM	PB

© National Roads Authority (NRA) 1994-2022. This drawing is confidential and the copyright in it is owned by NRA. This drawing must not be either loaned, copied or otherwise reproduced in whole or in part or used for any purpose without the prior permission of NRA, Transport Infrastructure Ireland (TII) is an operational name of the National Roads Authority.  
 © Ordnance Survey Ireland 2022/ OSI\_NMA\_273.  
 All elevations are in metres and relate to OSi Geoid Model (OSGM02) Malin Head as defined by existing Project Control.  
 All Co-ordinates are in Irish Transverse Mercator Grid (ITM) as defined by OSi active GPS station Tallaght College (TLG).

Client  
 TII NTA  
 Project  
 METROLINK  
 Consultant  
 JACOBS IDOM

Drawing Title	Swords Central - Fosterstown Landscape Layout Preliminary Design Issue	Drawing Status	S4
Drawing N°	ML1-JAI-ARL-SC03_XX-DR-Y-00006		
Scales Original Size A1	1:1000	Sheet	2 of 2





### LEGEND

Proposed Tree Planting 18-20cm standard native tree Refer to planting schedule	Pond water surface
Proposed Feature Tree Planting 200-220 cm trunk Refer to planting schedule	Wetland area shallow permanent water with wetland planting
Orchard planting To communal areas in the Linear Park	Revet water edge planting
Woodland planting Following the Miyawaki method	Periodically flooded meadow
Grass Assembly Grass seeding on min. 225mm approved topsoil	Low mounding/depression To linear park
Ornamental perennial/groundcover plant mix Refer to planting schedule. All planting to be planted into 150mm approved topsoil	Timber pathway
Swale planting Refer to planting schedule. All planting to be planted into 450mm approved topsoil	Steps
Wildflower Meadow Wildflower Meadow seeding on min. 225mm approved topsoil	HVM Bollards
Low mounding To linear park	Raised planters To main plaza 450mm high raised planters with concrete seats
Woodland planting To boundary slopes and embankments	Seat Concrete seat with backrest and armrest 500mm high above paving level
Bark Mulch Safety Surfacing To formal playground	Bicycle parking structure With Cafe and changing area
Rain bound gravel Buff coloured To bicycle parking	Bicycle stand 'Sheffield' type bicycle stand
Compacted gravel path Buff coloured compacted gravel to pedestrian footpaths in the linear park	Spot level
Concrete footpaths To highly used pedestrian routes	
Stone Paving Stone Paving for footpaths and plaza 300x200mm, 80mm thick Colour: Silver, Mid Grey, Graphite	
Tactile Stone Paving Around V pillars at Station Plaza	
Swale planting/rain garden Refer to planting schedule. All planting to be planted into 450mm approved topsoil	
Wildflower Meadow Wildflower Meadow seeding on min. 225mm approved topsoil	
Shrub planting/hedge 600mm approved topsoil	
	Fence Type A - 1.8m High Boundary Wall with H&E Containment
	Fence Type B - 800mm concrete parapet with 1200mm Mesh/Fence on top
	Fence Type C - 1.8m Mesh/Fence
	Fence Type D&E - Timber Post and Rail
	Fence Type F - 1.8m Mesh/Fence with additional bar stop netting above
	Fence Type G - 1.8m Timber Noise Barrier
	Fence Type H - Residential wall and siding
	Metsink Controlled Gate
	Landscape Controlled Gate

Key Plan

REV.	DATE	DESCRIPTION	DRAWN BY	CHECKED BY	REVIEWED BY	APPROVED BY
P03	01/09/22	Preliminary Design Issue	FP	MM	MM	PB
P01	18/05/21	Preliminary Design Issue	CF	FP	FP	NC
P02	28/07/22	Preliminary Design Issue	FP	MM	MM	PB

© National Roads Authority (NRA) 1994-2022. This drawing is confidential and the copyright in it is owned by NRA. This drawing must not be either loaned, copied or otherwise reproduced in whole or in part or used for any purpose without the prior permission of NRA, Transport Infrastructure Ireland (TII) is an operational name of the National Roads Authority.  
© Ordnance Survey Ireland 2022/ OSI\_NMA\_273.  
All elevations are in metres and relate to OSI Geoid Model (OSGM02) Malin Head as defined by existing Project Control.  
All Co-ordinates are in Irish Transverse Mercator Grid (ITM) as defined by OSI active GPS station Tallaght College (TLLO).

Client

Consultant

Project  
**METROLINK**

Drawing Title  
 Fosterstown - Dublin Airport  
 Landscape Layout  
 Preliminary Design Issue

Drawing Status  
 S4

Drawing N°  
 ML1-JAI-ARL-SC04\_XX-DR-Y-00007

Scales Original Size A1 1:1000

Sheet 1 of 2





**LEGEND**

- Proposed Tree Planting  
18-20cm standard native tree  
Refer to planting schedule
- Proposed Feature Tree Planting  
200-250 cm tree  
Refer to planting schedule
- Overhead planting  
To communal areas in the Linear Park
- Woodland planting  
Following the Miyawaki method
- Grass  
Amenity Grass seeding on  
min. 200mm approved topsoil
- Ornamental perennial/groundcover plant mix  
Refer to planting schedule. All planting to be  
planted into 450mm approved topsoil
- Swale planting  
Refer to planting schedule. All planting to be planted  
into 450mm approved topsoil
- Wildflower Meadow  
Wildflower Meadow seeding on  
min. 225mm approved topsoil
- Low mounding  
To linear park
- Woodland planting  
to boundaries slopes and embankments
- Bark Mulch Safety Surfacing  
To formal playground
- Resin bound gravel  
Buff coloured  
To bicycle parking
- Compacted gravel path  
Buff coloured compacted gravel to pedestrian  
footpaths in the linear park
- Concrete footpath  
To highly used pedestrian routes
- Stone Paving  
Stone Paving for footpath and plaza  
300x300mm, 60mm thick  
Colour: Silver, Mid Gray, Graphite
- Tactile Slab Paving  
Around V pillars at Station Plaza
- Swale planting/rain garden  
Refer to planting schedule. All planting to be  
planted into 450mm approved topsoil
- Wildflower Meadow  
Wildflower Meadow seeding on  
min. 225mm approved topsoil
- Shrub planting/hedge  
600mm approved topsoil
- Pond  
water surface
- Wetland area shallow permanent water  
with wetland planting  
-water filtration
- Reed water edge planting
- Periodically flooded  
meadow
- Low mounding/depression  
To linear park
- Timber  
pathway
- Steps
- W/M Bollards
- Raised planters  
To main plaza  
450mm high raised planters with concrete seats
- Seat  
Concrete seat with backrest and armrest  
500mm high above paving level
- Bicycle parking structure  
With Cafe and changing area
- Bicycle stand  
Shaded type bicycle stand
- Spot level

Legend	Description
	Fence Type A - 1.8m High Boundary Wall with 180 Containment
	Fence Type B - 600mm concrete parapet with 1200mm Meshweave Fence on top
	Fence Type C - 1.8m Meshweave Fence
	Fence Type D&E - Timber Post and Rail
	Fence Type F - 1.8m Meshweave Fence with additional ball stop netting above
	Fence Type G - 1.8m Timber Noise Barrier
	Fence Type H - Residential wall and capping
	Metrolink Controlled Gate
	Landowner Controlled Gate

Key Plan

REV.	DATE	Description	DRAWN BY	CHECKED BY	REVIEWED BY	APPROVED BY
P03	01/09/22	Preliminary Design Issue	FP	MM	MM	PB
P02	28/07/22	Preliminary Design Issue	FP	MM	MM	PB

© National Roads Authority (NRA) 1994-2022. This drawing is confidential and the copyright in it is owned by NRA. This drawing must not be either loaned, copied or otherwise reproduced in whole or in part or used for any purpose without the prior permission of NRA, Transport Infrastructure Ireland (TII) is an operational name of the National Roads Authority.  
© Ordnance Survey Ireland 2022/ OSi\_NMA\_273.  
All elevations are in metres and relate to OSi Geoid Model (OSGM02) Malin Head as defined by existing Project Control.  
All Co-ordinates are in Irish Transverse Mercator Grid (ITM) as defined by OSi active GPS station Tallaght College (TLG0).

Client  
  
 Project  
  
 Consultant

Drawing Title	Fosterstown - Dublin Airport Landscape Layout Preliminary Design Issue	Drawing Status	S4
Drawing N°	ML1-JAI-ARL-SC04_XX-DR-Y-00008		
Scales Original Size A1	1:1000	Sheet	2 of 2





**Legend**

- Fence Type A - 3.8m High Boundary Wall with H4u Containment
- Fence Type B - 800mm concrete parapet with 1200mm Meshwork Fence on top
- Fence Type C - 1.8m Meshwork Fence
- Fence Type DAE - Timber Post and Rail
- Fence Type F - 1.8m Meshwork Fence with additional 500mm strip setting along
- Fence Type G - 1.8m Timber fence
- Barrier
- Fence Type H - Residential wall and railing
- Metrolink Controlled Gate
- Landowner Controlled Gate

**LEGEND**

- Proposed Tree Planting  
18-20cm standard native tree  
Refer to planting schedule
- Proposed Feature Tree Planting  
200-220 cm trunk  
Refer to planting schedule
- Woodland planting  
Following the Miyawaki method
- Grass  
Amenity Grass seeding on min. 225mm approved topsoil
- Ornamental perennial/groundcover plant mix  
Refer to planting schedule. All planting to be planted into 450mm approved topsoil
- Urban forest planting  
Planting of trees and shrubs  
15 native species, on min 1200mm approved topsoil
- Wildflower Meadow  
Wildflower Meadow seeding on min. 225mm approved topsoil
- Low mounding  
To road side verges
- Compacted gravel path  
Buff coloured compacted gravel to pedestrian footpaths in the linear park
- Concrete footpath  
To highly used pedestrian routes
- Stone Paving  
Stone Paving for footpath and plaza  
300x200mm, 80mm thick  
Colour: Silver, Mid Grey, Graphite
- Tactile Stone Paving  
Around V pillars at Station Plaza
- Raised planters  
To main plaza  
400mm high raised planters with concrete seats
- Seat  
Concrete seat with backrest and armrest  
500mm high above paving level
- Bicycle stand  
"Shed" type bicycle stand
- Spot level

Key Plan

P03	01/09/22	Preliminary Design Issue	FP	MM	MM	PB
P01	23/07/21	Preliminary Design Issue	CF	FP	FP	NC
P02	28/07/22	Preliminary Design Issue	FP	MM	MM	PB
REV.	DATE	DESCRIPTION	DRAWN BY	CHECKED BY	REVIEWED BY	APPROVED BY

© National Roads Authority (NRA) 1994-2022. This drawing is confidential and the copyright in it is owned by NRA. This drawing must not be either loaned, copied or otherwise reproduced in whole or in part or used for any purpose without the prior permission of NRA, Transport Infrastructure Ireland (TII) is an operational name of the National Roads Authority.  
 © Ordnance Survey Ireland 2022/ OSI\_NMA\_273.  
 All elevations are in metres and relate to OSI Geoid Model (OSGM02) Malin Head as defined by existing Project Control.  
 All Co-ordinates are in Irish Transverse Mercator Grid (ITM) as defined by OSI active GPS station Tallaght College (TLG).

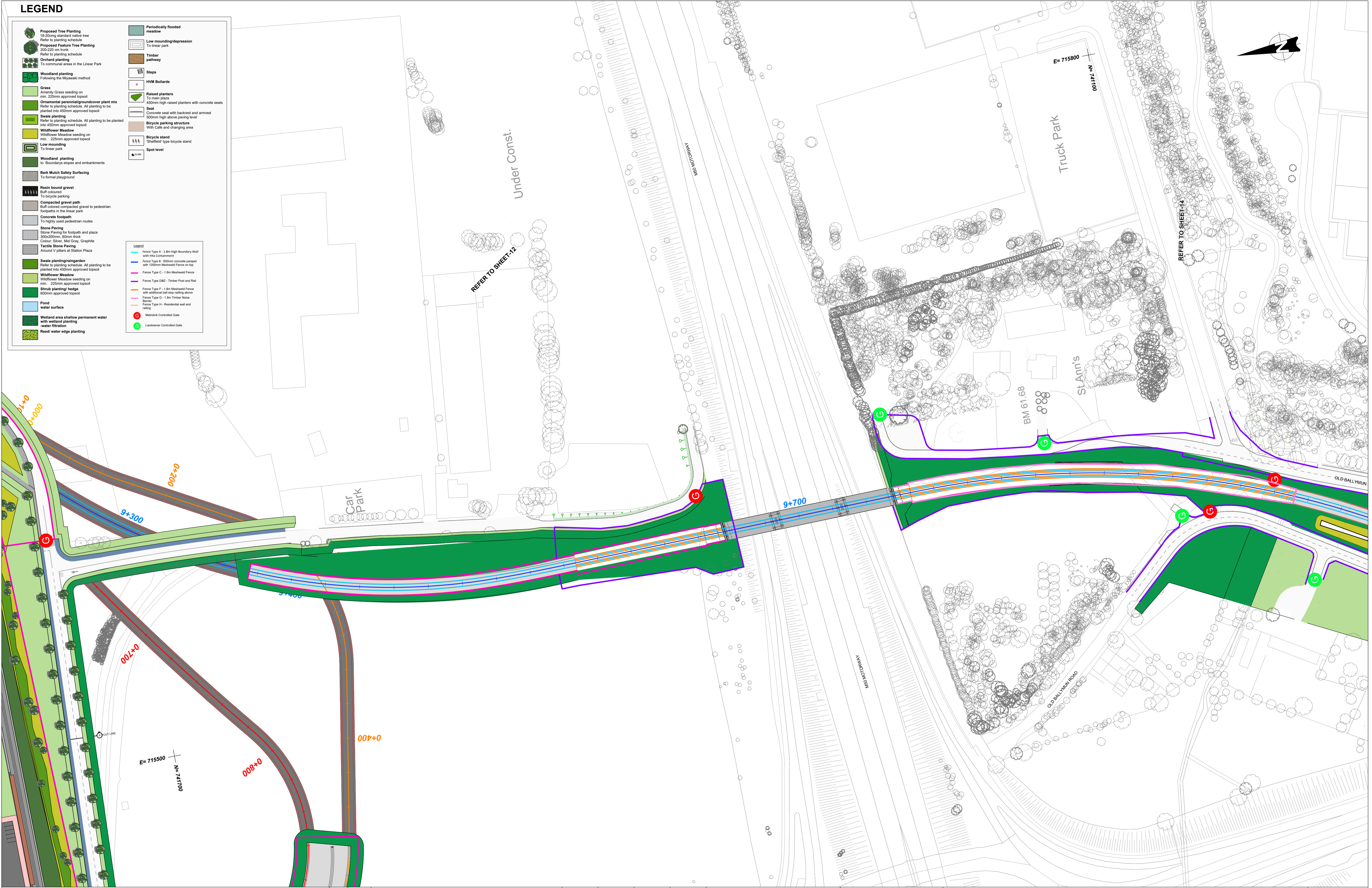
Client  
  
 Project  
  
 Consultant

Drawing Title	Depot & Dardistown Station Dardistown-Northwood Landscape Plan Preliminary Design Issue	Drawing Status	S4
Drawing N°	ML1-JAI-ARL-SC06_GF-DR-Y-00113	Sheet	of
Scales	Original Size A1 AS SHOWN		



### LEGEND

	Proposed Tree Planting 18-20cm standard native tree Refer to planting schedule		Periodically flooded meadow
	Proposed Feature Tree Planting 200-250 cm trunk Refer to planting schedule		Low mounding/depression to linear park
	Orchard planting To communal areas in the Linear Park		Timber pathway
	Woodland planting Following the Miyawaki method		Steps
	Grass Amenity Grass seeding on min. 225mm approved topsoil		HVM Bollards
	Ornamental perennial/groundcover plant mix Refer to planting schedule. All planting to be planted into 450mm approved topsoil		Raised planters To main plaza 450mm high raised planters with concrete seats
	Swale planting Refer to planting schedule. All planting to be planted into 450mm approved topsoil		Seat Concrete seat with backrest and armrest 500mm high above paving level
	Wildflower Meadow Wildflower Meadow seeding on min. 225mm approved topsoil		Bicycle parking structure With Cafe and changing area
	Low mounding To linear park		Bicycle stand 'Shelfield' type bicycle stand
	Woodland planting to boundaries slopes and embankments		Spot level
	Bark Mulch Safety Surfacing To formal playground		
	Resin bound gravel Buff coloured To bicycle parking		
	Compacted gravel path Buff coloured compacted gravel to pedestrian footpaths in the linear park		
	Concrete footpath To highly used pedestrian routes		
	Stone Paving Stone Paving for footpath and plaza 300x300mm, 60mm thick Colour: Silver, Mid Gray, Graphite		
	Tactical Stone Paving Around V pillars at Station Plaza		
	Swale planting/raingarden Refer to planting schedule. All planting to be planted into 450mm approved topsoil		
	Wildflower Meadow Wildflower Meadow seeding on min. 225mm approved topsoil		
	Shrub planting/hedge 600mm approved topsoil		
	Pond water surface		
	Wetland area shallow permanent water with wetland planting -water filtration		
	Reed water edge planting		



Key Plan

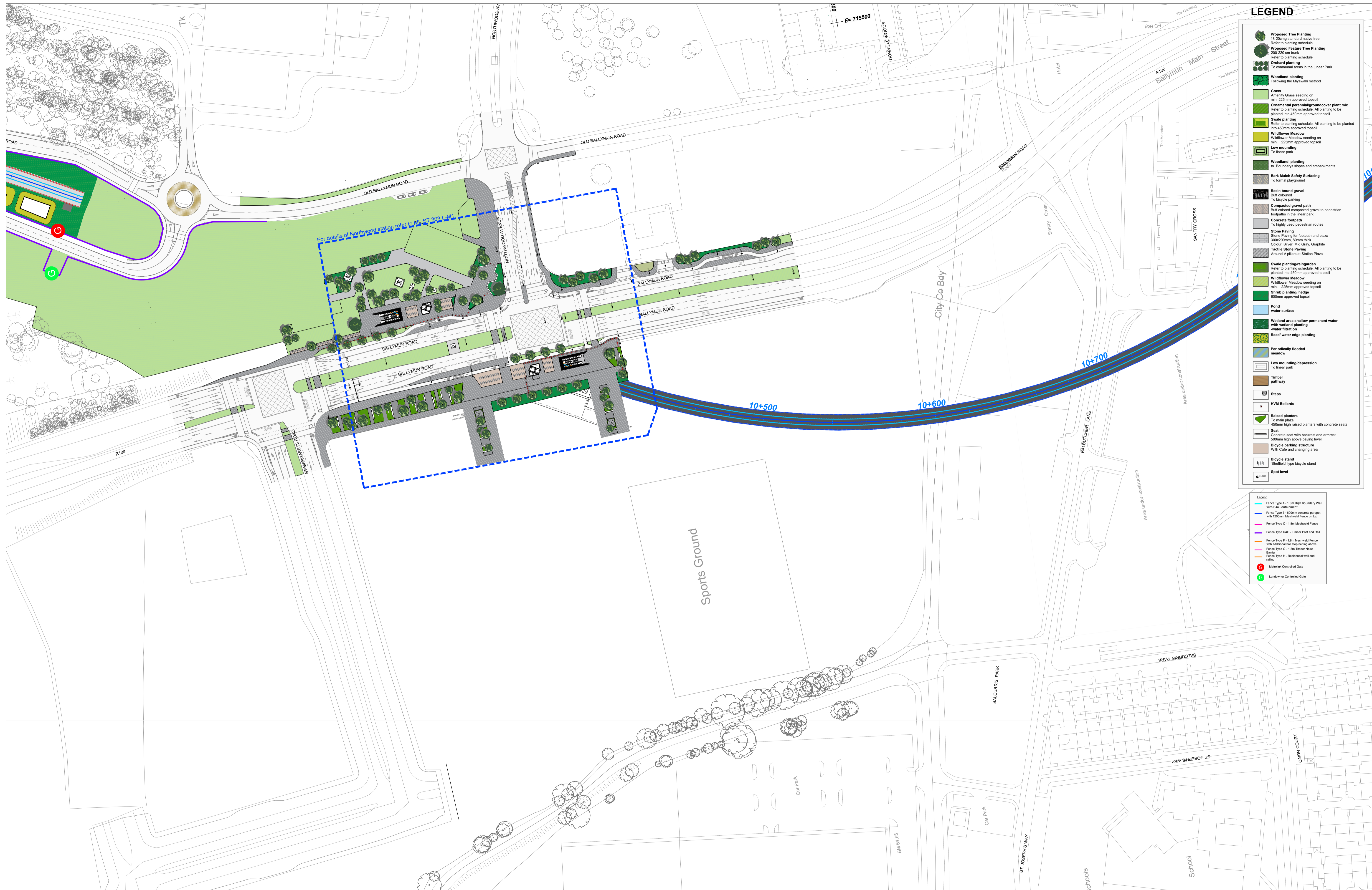
REV.	DATE	DESCRIPTION	DRAWN BY	CHECKED BY	REVIEWED BY	APPROVED BY
P03	01/09/22	Preliminary Design Issue	FP	MM	MM	PB
P01	28/05/21	Preliminary Design Issue	FP	MM	MM	PB
P02	28/07/22	Preliminary Design Issue	FP	MM	MM	PB

© National Roads Authority (NRA) 1994-2022. This drawing is confidential and the copyright in it is owned by NRA. This drawing must not be either loaned, copied or otherwise reproduced in whole or in part or used for any purpose without the prior permission of NRA. Transport Infrastructure Ireland (TII) is an operational name of the National Roads Authority.  
 © Ordnance Survey Ireland 2022/ OSI\_NMA\_273.  
 All elevations are in metres and relate to OSI Geoid Model (OSGM02) Malin Head as defined by existing Project Control.  
 All Co-ordinates are in Irish Transverse Mercator Grid (ITM) as defined by OSI active GPS station Tallaght College (TLG).

Client  
  
 Project  
  
 Consultant

Drawing Title	Northwood-Ballymun Landscape Layout Preliminary Design Issue	Drawing Status	S4
Drawing N°	ML1-JAI-ARL-SC07_GF-DR-X-00113		
Scales Original Size A1	1:500	Sheet	of





### LEGEND

- Proposed Tree Planting** (Green circle with 'C') 18-20cm standard native tree. Refer to planting schedule.
- Proposed Feature Tree Planting** (Green circle with 'F') 200-250cm trunk. Refer to planting schedule.
- Orchard planting** (Green square) To communal areas in the Linear Park.
- Woodland planting** (Green square) Following the Miyawaki method.
- Grass** (Light green square) Amenity Grass seeding on min. 225mm approved topsoil.
- Ornamental perennial/groundcover plant mix** (Dark green square) Refer to planting schedule. All planting to be planted into 450mm approved topsoil.
- Swale planting** (Light green square) Refer to planting schedule. All planting to be planted into 450mm approved topsoil.
- Wildflower Meadow** (Yellow-green square) Wildflower Meadow seeding on min. 225mm approved topsoil.
- Low mounding** (Green square) To linear park.
- Woodland planting** (Green square) To boundaries slopes and embankments.
- Bark Mulch Safety Surfacing** (Brown square) To formal playground.
- Resin bound gravel** (Brown square) Buff colour. To bicycle parking.
- Compacted gravel path** (Brown square) To highly used pedestrian routes.
- Concrete footpath** (Grey square) To highly used pedestrian routes.
- Stone Paving** (Grey square) Stone Paving for footpath and plaza 300x300mm, 60mm thick. Colour: Silver, Mid Gray, Graphite.
- Tactile Stone Paving** (Grey square) Around V pillars at Station Plaza.
- Swale planting/raingarden** (Green square) Refer to planting schedule. All planting to be planted into 450mm approved topsoil.
- Wildflower Meadow** (Yellow-green square) Wildflower Meadow seeding on min. 225mm approved topsoil.
- Shrub planting/hedge** (Green square) 600mm approved topsoil.
- Pond** (Blue square) water surface.
- Wetland area shallow permanent water** (Blue square) with wetland planting -water filtration.
- Reed water edge planting** (Blue square).
- Periodically flooded meadow** (Blue square).
- Low mounding/depression** (Green square) To linear park.
- Timber pathway** (Brown square).
- Steps** (Brown square).
- HVM Bollards** (Brown square).
- Raised planters** (Green square) To main plaza. 450mm high raised planters with concrete seats.
- Seat** (Brown square) Concrete seat with backrest and armrest. 500mm high above paving level.
- Bicycle parking structure** (Brown square) With Cafe and changing area.
- Bicycle stand** (Brown square) 'Shed' type bicycle stand.
- Spot level** (Brown square).

### Fences

- Fence Type A** - 1.8m High Boundary Wall with H44 Containment.
- Fence Type B** - 1000mm concrete parapet with 1200mm Meshsteel Fence on top.
- Fence Type C** - 1.8m Meshsteel Fence.
- Fence Type DAE** - Timber Post and Rail.
- Fence Type F** - 1.8m Meshsteel Fence with additional ball stop netting above.
- Fence Type G** - 1.8m Timber Noise Barrier.
- Fence Type H** - Residential wall and railing.

### Lozels

- Lozel** (Blue line) - 1.8m High Boundary Wall with H44 Containment.
- Lozel** (Blue line) - 1000mm concrete parapet with 1200mm Meshsteel Fence on top.
- Lozel** (Blue line) - 1.8m Meshsteel Fence.
- Lozel** (Blue line) - Timber Post and Rail.
- Lozel** (Blue line) - 1.8m Meshsteel Fence with additional ball stop netting above.
- Lozel** (Blue line) - 1.8m Timber Noise Barrier.
- Lozel** (Blue line) - Residential wall and railing.

Key Plan

REV.	DATE	DESCRIPTION	DRAWN BY	CHECKED BY	REVIEWED BY	APPROVED BY
P03	01/09/22	Preliminary Design Issue	FP	MM	MM	PB
P02	28/07/22	Preliminary Design Issue	FP	MM	MM	PB
P01.1	30/04/21	Preliminary Design Issue	FP	MM	MM	PB

© National Roads Authority (NRA) 1994-2022. This drawing is confidential and the copyright in it is owned by NRA. This drawing must not be either loaned, copied or otherwise reproduced in whole or in part or used for any purpose without the prior permission of NRA, Transport Infrastructure Ireland (TII) is an operational name of the National Roads Authority.  
 © Ordnance Survey Ireland 2022/ OSI\_NMA\_273.  
 All elevations are in metres and relate to OSI Geoid Model (OSGM02) Mean Head as defined by existing Project Control.  
 All Co-ordinates are in Irish Transverse Mercator Grid (ITM) as defined by OSI active GPS station Tallaght College (TLG).

Client  
 TII NTA  
 Project  
 METROLINK  
 Consultant  
 JACOBS IDOM

Drawing Title	Northwood-Ballymun Landscape Layout Preliminary Design Issue	Drawing Status	S4
Drawing N°	ML1-JAI-ARL-SC07_GF-DR-Y-00114		
Scales Original Size A1	1:500	Sheet	of